

# HSF


**NOTES:**

Current Rating:8A  
 Voltage Rating:300V  
 Contact Resistance:8milliohm Max  
 Withstand Voltage:AC2000V  
 Insulation Resistance:1000Megohm Min  
 Screw Torque: 2 lbf.in  
 Wire range: 16-30AWG  
 Operation Temperature:-40°C to +105°C

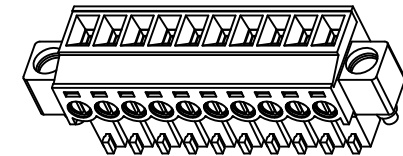
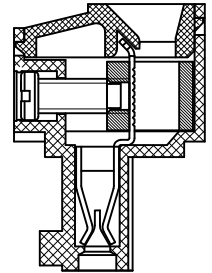
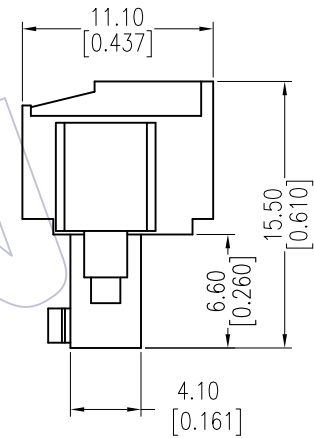
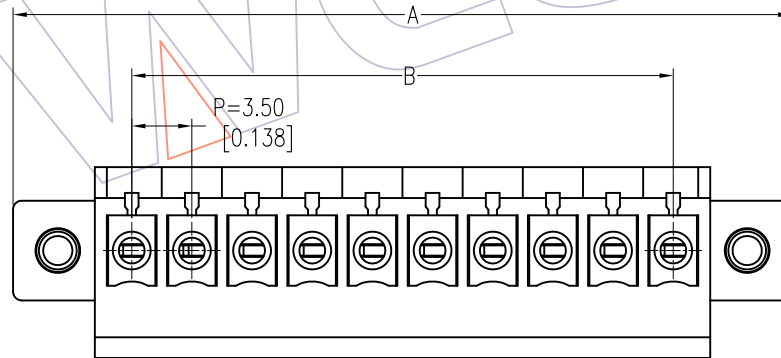
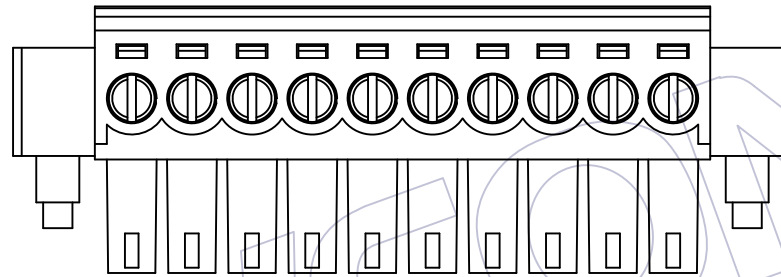
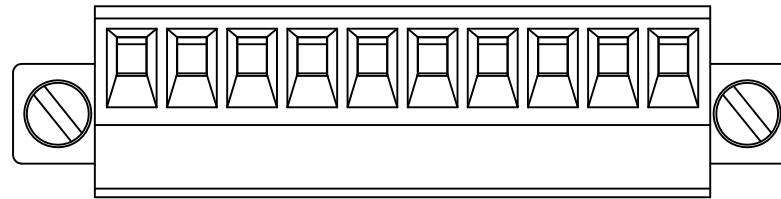
Housing Material:PA66 UL94V-0  
 Cover Material:PA66 UL94-V0  
 Screw:Steel  
 Pin Block:Brass  
 Contact:Phosphor Bronze  
 Side Screw:Steel




**Ordering Information:**

**P F 350 - C XX A SM W 1**

F=Female Pitch 350=3.50  
 No. of Pins 02-20P  
 Color A=Green SM=Matte Tin  
 Type W=With Screw 

11P	48.80 ±0.30	35.00 ±0.30			
10P	45.30 ±0.30	31.50 ±0.30	20P	80.30 ±0.40	66.50 ±0.40
9P	41.80 ±0.30	28.00 ±0.30	19P	76.80 ±0.40	63.00 ±0.40
8P	38.30 ±0.20	24.50 ±0.20	18P	73.30 ±0.40	59.50 ±0.40
7P	34.80 ±0.20	21.00 ±0.20	17P	69.80 ±0.40	56.00 ±0.40
6P	31.30 ±0.20	17.50 ±0.20	16P	66.30 ±0.40	52.50 ±0.40
5P	27.80 ±0.20	14.00 ±0.20	15P	62.80 ±0.40	49.00 ±0.40
4P	24.30 ±0.20	10.50 ±0.20	14P	59.30 ±0.30	45.50 ±0.30
3P	20.80 ±0.20	7.00 ±0.20	13P	55.80 ±0.30	42.00 ±0.30
2P	17.30 ±0.20	3.50 ±0.10	12P	52.30 ±0.30	38.50 ±0.30
PIN	A	B	PIN	A	B



REV	DATE	MODIFICATION DESCRIPTION	CHANGE	OPERATION	DRAW	DATE	SCALE	FIT	PART NO.
A2	2015/07/15	Modify		X.X ±0.40	Allen	2015/07/15	UNIT mm		PF350-CXXASMW1 
A1	2012/05/09	MODIFY PM350-01-XX-A-SM → PF350-CXXASMW1		X.XX ±0.25	CHECK	DATE	SIZE A4		TITLE: 3.50mm Pitch Female Pluggable Terminal Blocks
A0	2011/06/07	NEW	—	X.XXX ±0.15	APPROVE	DATE	SHEET 1/1		Customer NO.
				Angle ± 3°			PROJ.		
				DIM TOL					

**WCON**

Http: www.wcon.com

WCON-Dongguan Tel: +86 769 85358920 Fax: +86 769 85358915 E-mail: sales@wcon.com  
 WCON-Kunshan Tel: +86 512 57468408 Fax: +86 512 57468468 E-mail: salesks@wcon.com